

Great Otway National Park and Otway Forest Park Torquay to Kennett River



Angahook Visitor Guide

“Rugged coastlines, dramatic cliff faces, sandy beaches and rock platforms, steep forested ridges and deep valleys of tall forest and fern clad gullies embracing spectacular waterfalls all feature here. *Angahook* comes from the language of the Wauthaurung people, whose ancestors lived for thousands of years off the lands in the eastern areas of the Otway Ranges. Wauthaurung people continue their spiritual and physical connection here today.” -Ranger In Charge, Dale Antonysen

Wedge-tailed Eagle.

The Parks provide vital homes, food and shelter for Eagles and a huge variety of other species, including 43 species only found in the Parks and nowhere else in the world!



Getting out and about

The Parks provide a multitude of activities for visitors to enjoy. Camping, fishing, horse riding, touring, bushwalking, mountain biking, or 4WD, there's something for everyone.

Parks for the future

A healthy park system is a vital component of a healthy community - parks offer tranquil natural areas where you can release your stress. Parks Victoria is dedicated to protecting and improving the wonderful natural environment - and helping Victorians become healthier.

Great Otway National Park is a new and distinctive National Park around 102,500 hectares linking what was the Otway National Park, Angahook-Lorne State Park, Carlisle State Park, Melba Gully State Park and State Forest areas.

Otway Forest Park, to be proclaimed by 2008, encompasses almost 40,000 hectares of mountain and foothill forests extending from the main ridge of the Otway Ranges to the undulating plains and plateaus further inland.

Location and access

The Great Otway National Park and proposed Otway Forest Park are south of Melbourne via Geelong or Colac. From the west, approach via Port Campbell along the Great Ocean Road.

A daily bus service between Geelong, Lorne and Apollo Bay connects with train services to Melbourne. For timetable details call **V/Line Country Information on 13 2232.**



Picnicking and Camping

Picnic opportunities abound with lovely settings at Blanket Leaf, Sheoak, Distillery Creek, Grey River and Moggs Creek, to name a few. There are many beautiful places to picnic, be sure to plan your visit to get the most out of your day!

There are excellent camping opportunities throughout the Parks. Whether you are looking for a family friendly place to park your caravan or a solitary night under the stars there's something to cater to every need. Please refer to the Park Camping Guide overleaf for further information.



Horse & mountain bike riding

Experience and enjoy the natural environment on horse back or mountain bike. A permit may be required for some sections of the Parks. Camping with horses is limited to areas within Otway Forest Park.

Park staff can assist you with planning your riding visit and will advise if a permit is necessary. Many open formed roads and tracks provide ideal trails that do not require a permit.

The 12km mountain bike loop linking West Barwon Reservoir and Lake Elizabeth is suitable for mountain bikers with moderate levels of fitness and experience.



Waterfalls

Many spectacular and historic waterfalls are accessible by a short stroll. They include Erskine, Phantom, Kalimna and Sheoak Falls.

Call into the new Lorne Visitor Information Centre to get current, up-to-date details on Tour Operators, activities, walks and other attractions nearby.

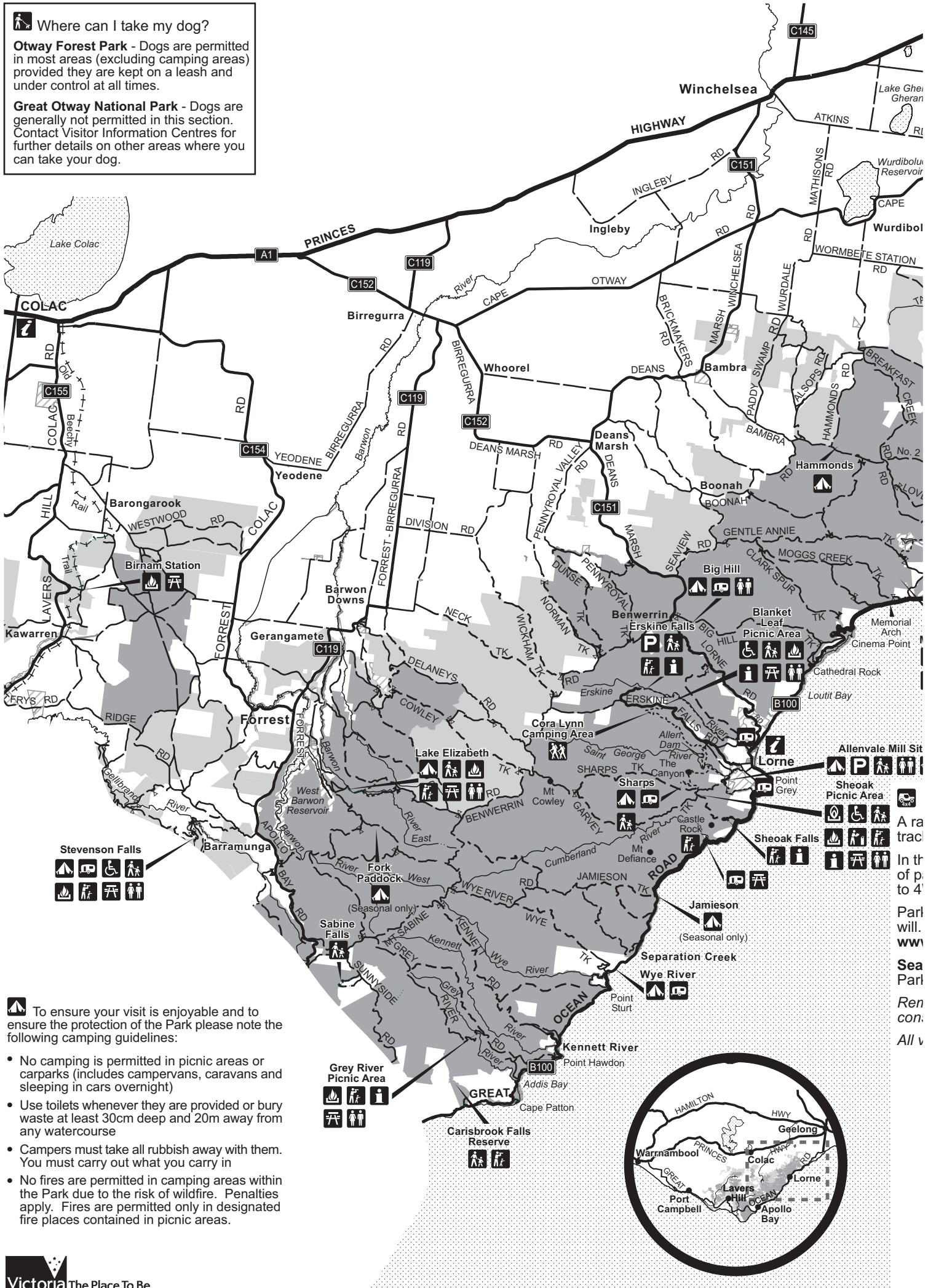




Where can I take my dog?

Otway Forest Park - Dogs are permitted in most areas (excluding camping areas) provided they are kept on a leash and under control at all times.

Great Otway National Park - Dogs are generally not permitted in this section. Contact Visitor Information Centres for further details on other areas where you can take your dog.



To ensure your visit is enjoyable and to ensure the protection of the Park please note the following camping guidelines:

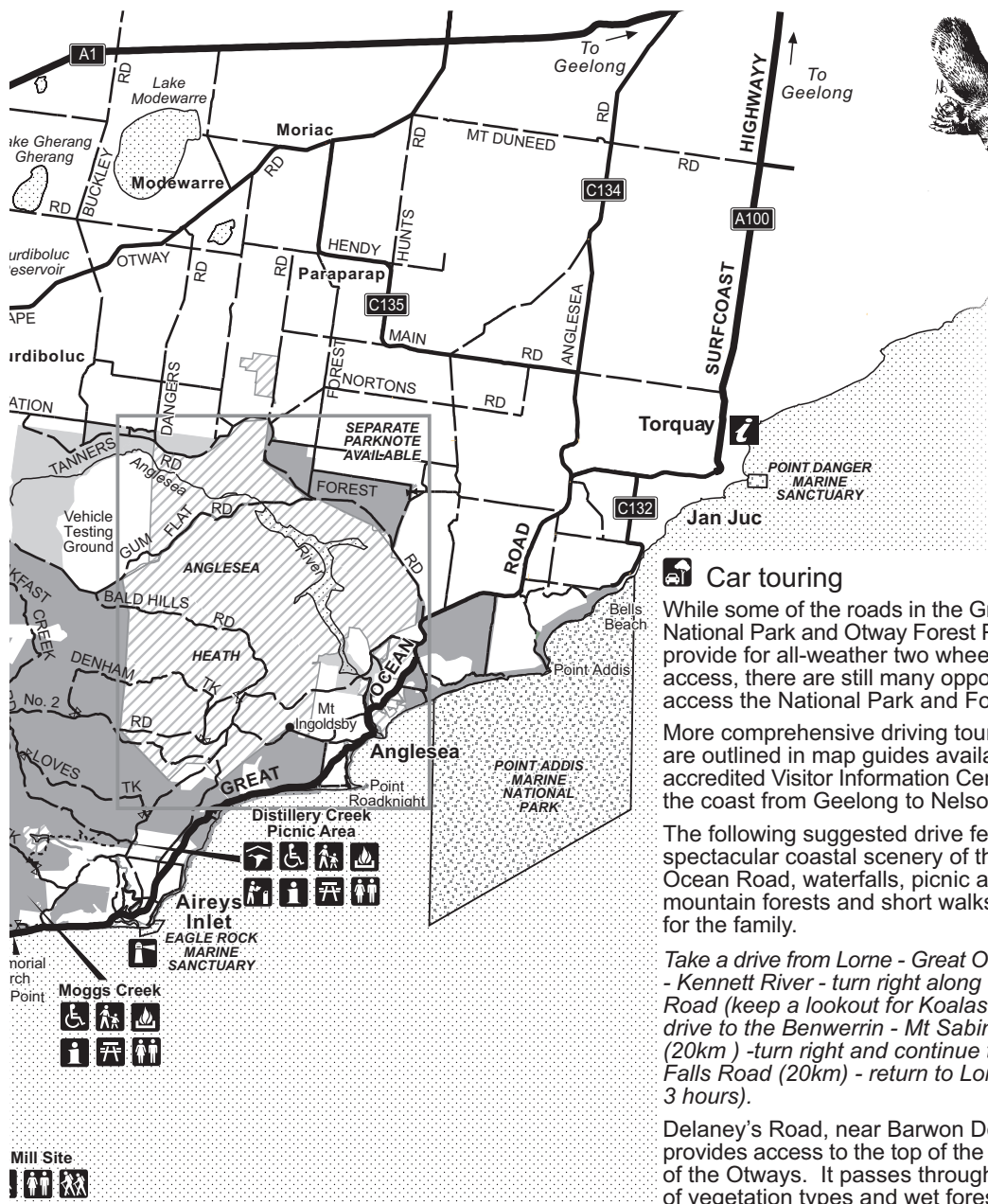
- No camping is permitted in picnic areas or carparks (includes campervans, caravans and sleeping in cars overnight)
- Use toilets whenever they are provided or bury waste at least 30cm deep and 20m away from any watercourse
- Campers must take all rubbish away with them. You must carry out what you carry in
- No fires are permitted in camping areas within the Park due to the risk of wildfire. Penalties apply. Fires are permitted only in designated fire places contained in picnic areas.

A ra
trac
In th
of p
to 4
Park
will
ww
Sea
Park
Ren
con
All v



Explore Lake Elizabeth and enjoy the beautiful forest surrounds. This lake was created in 1952 when the heaviest periods of rain on record resulted in a massive landslide that dammed the East Barwon River and turned a remote forested valley into a lake.

Platypus



Great Otway National Park & Otway Forest Park
(to be proclaimed by 2008)
Angahook

- Highway
- Sealed road
- Unsealed road
- Vehicle track
- Walking track
- Old Beechy Rail Trail
- Seasonally Closed Gate
- Management Vehicle Gate
- Great Otway National Park
- Otway Forest Park
- Marine National Park / Marine Sanctuary
- Other Reserves
- Water body

Car touring

While some of the roads in the Great Otway National Park and Otway Forest Park do not provide for all-weather two wheel drive access, there are still many opportunities to access the National Park and Forest Park.

More comprehensive driving tour options are outlined in map guides available from accredited Visitor Information Centres along the coast from Geelong to Nelson.

The following suggested drive features the spectacular coastal scenery of the Great Ocean Road, waterfalls, picnic areas, tall mountain forests and short walks suitable for the family.

Take a drive from Lorne - Great Ocean Road - Kennett River - turn right along Grey River Road (keep a lookout for Koalas here) and drive to the Benwerrin - Mt Sabine Road (20km) - turn right and continue to Erskine Falls Road (20km) - return to Lorne. (Allow 3 hours).

Delaney's Road, near Barwon Downs, provides access to the top of the main ridge of the Otways. It passes through an array of vegetation types and wet forests.

- Recreational Facilities**
- Barbecue-Gas
 - Bird hide
 - Camping
 - Caravan
 - Carpark
 - Facilities for people with disabilities
 - Fireplace
 - Lighthouse
 - Lookout
 - Park Information
 - Picnic table
 - Toilets
 - Tourist Information
 - Walk-in camping
 - Walk-family
 - Walk-guided

Four wheel driving and trail bike riding

A range of formed vehicular tracks and roads provide 4WD access throughout the Parks. From meandering tracks to rugged terrain there's something for every 4WD enthusiast or trail bike rider to enjoy.

In the drier months it is possible to venture into the cool temperate rainforests. Many historic sites and relics of past timber production found in the Forest Park are of interest to the keen explorer and accessible only to 4WD vehicles.

Parks Victoria works together with Four Wheel Drive Victoria on projects that demonstrate care and good will. If you'd like to get involved contact Four Wheel Drive Victoria on **03 9857 5209** or via their web site at www.vafwdc.org.au

Seasonal track closures apply to many tracks in the Great Otway National Park and proposed Otway Forest Park. For more details call Parks Victoria on **13 1963** or on the web at www.parkweb.vic.gov.au

Remember always stick to the tracks and avoid muddy areas to reduce damage to the environment. Be considerate, slow down or stop for horse riders, cyclists or hikers. Our Parks are for everyone to enjoy.

All vehicles must be registered and drivers licensed.

Location							Notes
Lake Elizabeth	20	●	●	●	●	●	Riverbank - close to lake.
Allenvale Mill Site	20	●	●	●	●	●	Walk-in - groups.
Big Hill	20	●	●	●	●	●	Open space camping.
Cora Lynn	2	●	●	●	●	●	Walk-in.
Hammonds	20	●	●	●	●	●	Open space camping.
Jamieson	6	●	●	●	●	●	Remote - seasonal.
Sharps	8	●	●	●	●	●	Close to walks.
Wye River	12	●	●	●	●	●	Near township.
Fork Paddock	6	●	●	●	●	●	Remote - seasonal.



For further information

Parks Victoria
Information Centre
Call **13 1963**
or visit the
Parks Victoria website
www.parkweb.vic.gov.au

Visitor Information
Centres

Torquay
C/O Surfworld Museum
Beach Road, Torquay 3280
Tel: (03) 5261 4219

Lorne
15 Mountjoy Pde
Lorne Vic 3232
Tel: (03) 5289 1152

Apollo Bay
Great Ocean Road
Apollo Bay Vic 3233
Tel: (03) 5237 6529

Colac
Cnr Murray & Queen Sts
(Princes Hwy), Colac 3250
Tel: (03) 5231 3730

Caring for the
environment

Take rubbish away with you
for recycling and disposal

All native plants & animals,
geological features &
historical & cultural remains
are protected by law in
parks & must not be
disturbed or removed

FIRE

Fires may only be lit in
fireplaces provided.

No fires/flames,
(including gas or fuel
stoves/lanterns in tents)
may be lit on days of

Total Fire Ban.

This area of the Great
Otway National Park and
proposed Otway Forest
Park is in the **South
Western and Central
Total Fire Ban Districts.**

**It is your responsibility
to know if it is a day of
Total Fire Ban.**

**If in doubt call the
Victorian Bushfire
Information Line:
1800 240 667.**

Mobile Phones

CAUTION: You may not be
in network range in some
areas of the park. If in
range you can connect to
Police, Ambulance or CFA -
**Key in 112 then press the
YES key**



Great short walks

Whether it is an afternoon stroll with the whole family, or a challenging multi-day hike there is something to suit everyone. Separate brochures are available from Visitor Information Centres with details on the variety of walks available.

1. Lower Kalimna Falls 6km, 2 hours

This gentle walk follows the route of an old timer tramway with interpretative signs that help bring the history of the trail back to life.

2. Ocean View 4.5km, 1 hour

A pleasant forest walk offering spectacular coastal views and kangaroo sightings.

3. Cora Lynn Cascades 4km, 90 minutes

A gentle walk through lush fern gullies to stunning cascades framed amongst a backdrop of native ferns and mosses.

There are detailed saleable, full colour, walk and touring maps available from Visitor Information Centres and retail outlets.



Wildlife watching

The Parks diverse habitat range across coast, tall mountain forests, rainforest, heathland and wetlands provide for a wide range of wildlife. There are many opportunities to catch a glimpse of them in their natural surroundings. Listen out for the grunts of the male Koala, or watch for a majestic King Parrot as it flies through the forest valley. If you visit the Park after dark keep your eyes and ears open for possums and gliders.

*Use the beach
carefully as the shy
and rare Hooded
Plovers share the
beach with you!*



Fishing and hunting

A number of watercourses which flow through the Parks, as well as the coastline, provide great opportunities for keen anglers.

Fishing is not permitted in Marine National Parks and Sanctuaries. Check separate marine parknotes for activity / boundary guidelines.

To fish, adults generally require a Victorian Amateur Fishing Licence, available from the Department of Primary Industries at www.dpi.vic.gov.au, or your local fishing and sports store.

Game hunting is undertaken by more than 30,000 licensed hunters in Victoria and is managed and administered here by the Department of Sustainability and Environment (DSE) and enforced by their authorised officers.

You are not permitted to carry a firearm or ammunition in the Great Otway National Park.

For further information on local designated hunting areas please contact the Department of Sustainability and Environment. Call 136 186.

A rich human history

The spiritual and physical connections of the four traditional language groups, Wathaurung, Gulidjan, Gadubanud, and Kirrae Whurrong people are still celebrated today.

Through their rich and diverse culture, Indigenous Australians have been intrinsically connected to Country - including the area now known as Great Otway National Park - for tens of thousand of years. People, stories, sites, shell middens, oven mounds and artefacts are all indicators of a healthy and diverse lifestyle.

Parks Victoria recognises this connection and acknowledges the Traditional Owners and Aboriginal Communities of these areas.

A proud logging history

The Otway forests hold a proud logging history and have been a timber source for more than 150 years. Timber production peaked in 1961 and has since reduced over the years. The forests here today demonstrate the time needed to regrow and reproduce the giants of the past.

Bushfires are a natural occurrence and shape the forests of the Otways. Historically several wildfires have burnt through the Otways this century - the last major fire was Ash Wednesday in 1983. Fire continues to play a vital role in forest ecology, influencing plant and animal diversity.

Ecological burns aim at replicating the natural fire cycle of the Australian environment.

Early tourism

Many of the walks around this area follow old timber tramways used in logging days. Other walking tracks were built late last century, making them among the earliest tourist developments in Victoria.

Using forest timber

While the Great Otway National Park has been established for the protection and preservation of the natural values of the area, the proposed Otway Forest Park allows for broader activities. The collection of timber and other forest resources (such as seeds and foliage) - for firewood, posts and poles and decorative products is allowed in designated areas.

Contact the Department of Sustainability & Environment (DSE) on 136 186 for further information, relevant maps, permits and resources.



Visitor Information Centres

To fully enjoy your visit to the Parks be sure to visit local Visitor Information Centres and plan ahead. Accredited VICs are located at Lorne, Colac, Apollo Bay, Port Campbell or Geelong (Corio) or visit www.visitotways.com and www.visitsurfcoast.com.

July 2006

Printed on Australian - made, 100% recycled paper